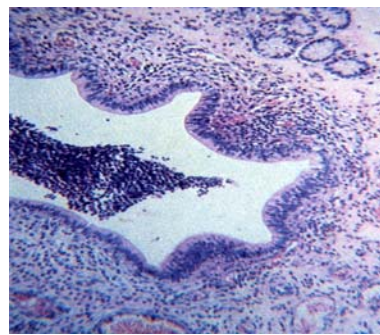
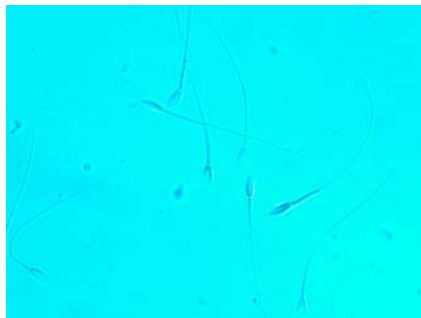


DIAGNOSTIC SERVICES: EVALUATION OF EQUINE SEMEN

Penn's Reference Andrology Laboratory offers an extensive line of diagnostic services for examination of equine semen. The primary purpose of these services is to aid practitioners in their differential diagnosis of individual and/or herd reproductive problems. These services are also frequently used by practitioners as a third-party quality control component in an ongoing auditing process. Our laboratory strives to perform objective, validated techniques for assessing equine semen samples. Below is a list of current tests offered:



ROUTINE SEMEN ANALYSES:

- ✓ Sample Volume (NIST traceable)
- ✓ Sperm motility (Computer Automated Semen Analysis [CASA] – IVOS)
- ✓ Sperm viability (CASA – Fluorophore)
- ✓ Sperm and Acrosome morphology (DIC – Nomarski Optics)
- ✓ Sperm Concentration and Total sperm (CASA; Hemacytometry)
- ✓ Sample osmolarity, conductivity, pH (NIST traceable)
- ✓ Routine Microbiology Evaluation, including:
 - Direct, aerobic culture
 - Enrichment techniques
 - Genus species identification of isolates
 - Antimicrobial susceptibility testing

OTHER:

- ✓ On-site auditing of processes and techniques
- ✓ Semen extender analyses
- ✓ Spermicidal assessment of materials and isolates
- ✓ Water analysis

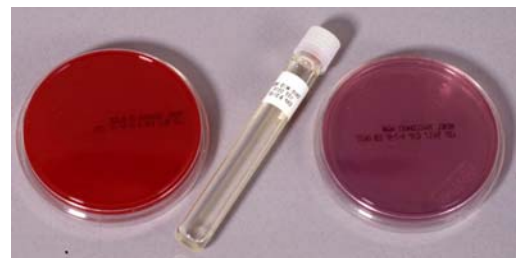
PERSONNEL:

Gary C. Althouse, DVM, MS, PhD,
Diplomate ACT

Von Miller-Lux, BS, Lab Manager

Betty Osborne, BS, MT (ASCP)

610-925-6562



FOR PRICING & SCHEDULING, CONTACT US AT:

Reference Andrology Laboratory
University of Pennsylvania
New Bolton Center
382 West Street Rd
Kennett Square, PA 19348

