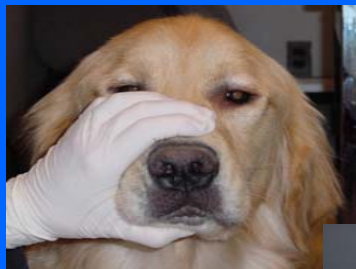


Brushing Your Pets' Teeth

4 Basic Steps:

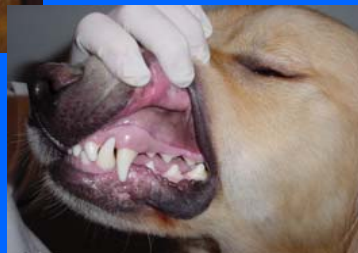


1.



Place your non-dominant hand in a C-Shape around the muzzle of your pet so the mouth is kept closed.

Retract the upper lip to make the teeth visible.



2.



Using a soft-bristled toothbrush:

1. Dampen the brush with water **only*** and place where the tooth and gingiva (gum) meet.
2. Angle the bristles at 45 degrees toward the gum line.

Using water instead of flavored toothpaste will deter your pet from chewing on the brush

3.



Move the brush in a **circular** motion with **mild** pressure. Too much pressure can damage and irritate the gingiva.

Bleeding may occur during the first few episodes of brushing

4.



Using toothpaste specifically for dogs and cats, apply the paste with your finger around the gingiva and teeth.

Remember

Toothpaste is not required for brushing; the mechanical motion of the bristles is essential for the removal of plaque.