

## Introduction to Health Certificates, Interstate, and International Movement of Animals

Aliza Simeone VMD  
Pennsylvania Department of Agriculture  
Bureau of Animal Health  
asimeone@pa.gov

What is the difference between a **health certificate** and “an **official health certificate**” and a **Certificate of Veterinary Inspection (CVI)**???

- ▶ An “Official Health Certificate” = a **Certificate of Veterinary Inspection (CVI)**
- ▶ This official, legal document must be completed by an Accredited Veterinarian (AV)
- ▶ CVIs are required for many interstate animal movements and for most international animal movement.
- ▶ CVIs are often required for livestock shows or fairs (e.g. PA Farm Show, many county fairs, etc.)

- ▶ An unofficial health certificate may just be a letter written on a vet's letterhead attesting to an animal's health status for a kennel, doggy daycare, or in some cases for travel by air.
- ▶ <https://www.avma.org/KB/Policies/Pages/Acclimation-Certificates.aspx>



## How do you know which to use?

- ▶ **Interstate movement:** check with the **destination state** to see if a CVI is required
- ▶ **Air Travel:** check with the **airline** in addition to the **destination** location because the airline can make their own rules about what they require
- ▶ **International movement:** check with **USDA APHIS VS** for requirements and forms
- ▶ For **PA fairs and shows:** check the **fair or show book (or website)** for requirements
- ▶ For out of state shows or fairs: check both the fair/show book or website and with the state of destination

## USDA, APHIS, VS vs. PDA BAHS Battle of the acronyms!

- |  |  |
|--|--|
| ▶ United States Department of Agriculture, Animal and Plant Health Inspection Service, Veterinary Services | ▶ Pennsylvania Department of Agriculture Bureau of Animal Health and Diagnostic Services |
|--|--|

Both are commonly called “The Department of Agriculture” and are generally confused by the general public as well as private veterinarians

## USDA, APHIS, VS

- ▶ Federal Department
- ▶ Area Offices around the U.S.
- ▶ PA has its own area office in Harrisburg
- ▶ Works cooperatively with states to achieve national disease eradication/regulation goals
- ▶ Regulates/negotiates international movement of animals and products

## PDA-BAHDS

- ▶ Commonwealth of PA Department
- ▶ Main office in Harrisburg
- ▶ 6 regional offices around PA
- ▶ Promulgates and enforces regulations and other regulatory articles within PA (e.g. rabies regulations, quarantines)
- ▶ Administers many programs with support from USDA (e.g. John's control, TB accreditation, Avian Influenza [AI] monitored flock)
- ▶ Determines requirements for entry of domestic animals into PA

- ▶ To be able to issue a CVI, you must be an actively Accredited Vet, authorized to perform accredited work in the state in which the animal inspection will take place to perform that work



- ▶ Yes, even for small animals

## No CVI Required?

- ▶ Some examples of destinations and species that currently do not require CVIs (but usually do require rabies certificates)
  - Canada for pet cats and dogs travelling with their owners
  - Pet dogs and cats travelling with owners or moving with owners to North Carolina
- MANY STATES DO REQUIRE A CVI FOR INTERSTATE IMPORTATION OF CATS AND DOGS

## So let's assume you need to write a CVI... What does that mean?

- ▶ **Accredited Veterinarians**
  - Advise owners on movement requirements of receiving country, state, or exhibition
  - Perform animal inspections and/or examinations
  - Administer vaccines and/or anti-parasite treatments (if required)
  - Collect samples for lab work (if required)
  - Complete CVI and related paperwork

## BASIC considerations to avoid getting in trouble with CVIs

- ▶ If you don't do all the work, credit the vet who did the other part (e.g. Dr. Bob Smith of Hickory, PA took the sample for the Coggins test on 11/5/19)
- ▶ Animals don't live in P.O. Boxes
- ▶ Send the completed paperwork in promptly!
- ▶ CVIs are valid for varying lengths of time depending on the purpose of the certificate, destination and species (e.g. 10 days, 30 days, all fair season, etc.)
- ▶ Some of the ethical considerations required for CVIs in the CFR are ALSO required in the PA Code for veterinary licensure...

11

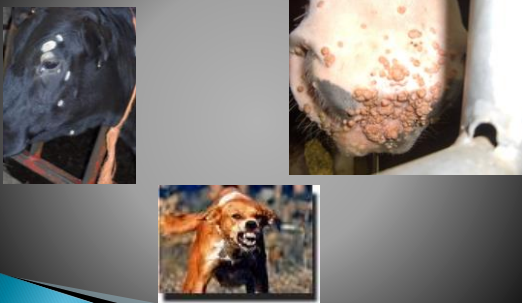
## A portion of the "Unprofessional or Unethical Conduct" section of Chapter 31 of the PA Code:

...Unprofessional or unethical conduct includes:

- ▶ "(6) Issuing any certificate attesting to the physical condition or soundness of an animal without first having personally examined the animal within a reasonable period of time and, by actual inspection and appropriate tests, determined that the animal meets the requirements for issuance of the certificate. A veterinarian may permit an employee to collect samples from animals for tests under the veterinarian's direct supervision.
- ▶ "(7) Failing to personally sign any official health document issued by the veterinarian unless the use of a signature stamp is authorized by law.
- ▶ "(8) Issuing a pre-signed or pre-stamped official health document.
- ▶ "(9) Allowing inappropriate use of the veterinarian's signature stamp."

12

## Do I have to write a CVI just because a client asked me to?



13

## Animal Identification

- ▶ **Must record THE ENTIRE official ID FROM THE ANIMAL** (not from someone else's paperwork!) for some species and some situations

- Most livestock have official ID requirements for interstate and international movement
- In PA, sheep and goat mandatory ID for any movement off the premises
- In PA, swine mandatory ID requirements for movement off premises
- If a tattoo cannot be read, it is not a form of ID
- If a tag is in a plastic bag, it is not the official ID of an animal.



14

## Examples of official I.D.



15

## Small Animal ID

- ▶ Some small animals must be officially identified for movement (usually by microchip)
- ▶ Most of the world requires that microchips be "ISO Compliant" which means that they have 15 digits and are read at a frequency of 134.2 kHz
- ▶ There are now a variety of ISO compliant pet microchips available in the U.S. but there are still a number of non-ISO compliant chips
- ▶ Some countries will allow the use of non-ISO compliant chips if the owner travels with a reader for that chip.



## Disclaimer for examples...

- ▶ I will be providing some very specific examples in this presentation
- ▶ These are for the purposes of illustrating certain points such as how specific ID requirements can be or what a certification statement might look like
- ▶ These are JUST examples and should not be used as official guidance for a specific animal movement as requirements change frequently and many of these are excerpts from a larger list of requirements.

## Conflicting Microchips Example

- ▶ **Hawaii** requires "An electronic microchip readable with a U.S. issue AVID scanner (AVID® or Home Again®) must be implanted"
- ▶ **The Cayman Islands** requires "Only microchip brands accepted by the International Standards organisation (Standard 11784 or Annex A to standard 11785) should be used."
- ▶ **St. Kitts and Nevis** requires "All animals to be imported into St. Kitts and Nevis must be identified with an AVID® or Home Again electronic microchip implant"

**You (the Accredited Vet) are responsible for finding out and fulfilling the movement requirements if you are going to issue the CVI!**

- ▶ NOT the owner
- ▶ Even if using a broker, YOU are still responsible for ensuring the CVI related requirements are met if you are issuing the CVI

## Important Contacts for Interstate & International Movement

### Interstate...

Call the state of destination's Department of Agriculture  
Use websites like [www.interstatelivestock.com](http://www.interstatelivestock.com)

### International...

USDA pet travel site:  
[https://www.aphis.usda.gov/aphis/ourfocus/importexport/sa\\_animals/sa\\_pet\\_travel](https://www.aphis.usda.gov/aphis/ourfocus/importexport/sa_animals/sa_pet_travel)

USDA "iregs" site:

<http://www.aphis.usda.gov/wps/portal/aphis/ourfocus/importexport>

USDA APHIS VS PA Area Office (for appointments, pre-approval of documents)

PA USDA APHIS VS Main number (717) 540-2777

PA Export line (717) 540-2770

PA Export fax 717-782-3809

Export email [yspspa@aphis.usda.gov](mailto:yspspa@aphis.usda.gov)

Export Center in NY 518-218-7540

20

## Electronic APHIS Form 7001

- The "Certificate of Examination for Small Animals" is now available on-line as a pdf
- **NOT always the correct form for small animal travel**
- If it IS the required form for your client's INTERNATIONAL destination, complete the form electronically, then print and sign before having it endorsed by the USDA APHIS VS Area office.
- **Not used for interstate pet movement anymore with few exceptions**

<http://www.aphis.usda.gov/library/forms/pdf/APHIS7001.pdf>

**\*\*Many countries have their own printable forms available online via the i-regs or pet travel sites\*\***

21

## Plan Ahead!



**How far ahead should my client and I plan?**

- Depends on the species and destination
  - Need to coordinate timing of physical exam, required vaccinations and any necessary tests
- In short, ASAP!
  - As soon as your client knows when and where they are traveling, start researching requirements

22

## Filling Out a Certificate (general)

- Use the appropriate required form(s)!
- Correct mistakes with a single line crossing out the error and initial the change. NEVER use correction fluid or tape.
- Some countries do not allow any abbreviations such as mo. for months, etc. (best to avoid abbreviations in general)
- Fill out the form **completely!**
  - Some countries require the form TYPED (e.g. livestock going to Mexico)
  - Some countries require a bilingual form (e.g. Germany, Italy)
- Include Certification Statements
- Include lab results
- Personally sign document in **colored ink!**
- Include permit information when required

23

## Import Permit Examples

- ▶ Hong Kong—owner has to pre-apply on paper and pay for a permit from Hong Kong through a fairly complicated process which provides a permit valid for 6 months and one trip only.
- ▶ Kentucky—sheep not for slaughter going to KY must travel under a free permit which is obtained by calling the KY Dept of Ag and writing the permit number on the CVI.

## Certification Statement Examples

- ▶ **Horses to Canada**—CVI must include multiple, very specific statements, frequently change
- ▶ **Hoofstock coming to PA from states with VS in the past 12 months**—CVI must include VS statement that “All animals identified on this certificate of veterinary inspection have been examined and found to be free from VS. During the past 90 days, these animals were not located within 10 miles of a site where VS has been diagnosed.”

## Order and timing are VERY important!

- ▶ You need to perform the tasks required in the order required
- ▶ You need to perform the tasks required within the time frame prescribed by the destination
- ▶ If travel plans change (or you do something out of order), you may need to start over



## How do you get an international certificate endorsed?

- ▶ **Hand delivery and return:** make an appointment with a USDA APHIS VS Area Office for in person endorsement
- ▶ **Shipping:** send the documents and payments by expedited shipment (FedEx, UPS, DHS, etc.). Include a pre-paid and addressed overnight return shipment envelope with the documents and payment
  - The USDA usually has about a 72 hour turn-around time
- ▶ **VEHCS System**—almost all countries accept now!

27

## Intrastate or Interstate Movement

- ▶ PDA paper CVIs
  - **AAI-13 form**
    - Any species
  - **AAI-14 form**
    - Small animal only
- ▶ eCVIs



28

## PA-CVI Basics

- Layman's term: “health certificates”
- **NEVER** for international movement

Obtained for free from regional PDA office or the PVL BY REQUEST—not an automatic delivery once you become accredited!



29

## e-CVIs

Interstate

- ▶ AgView
- ▶ Global Vet Link
- ▶ Vet Sentry
- ▶ New Planet Technologies


- ▶ Faster traceability, e-delivery to states and clients, legible, complete



30

# After the form is completed, what do you do with all the papers?

- ▶ Each page says what it is for...
  - ✓ Copies 1, 2 & 5 mailed to:
    - ✓ PDA BAHDS  
2301 N. Cameron St.  
Harrisburg, PA 17110
  - ✓ Copy 3 accompanies shipment
  - ✓ Copy 4 remains in veterinarian's file



34

- ▶ Movement of domestic animals across borders, especially to rabies free locations is COMPLICATED
- ▶ A great attention to detail in timing, order, and paperwork is required to allow these movements to go smoothly
- ▶ You, the accredited vet, need to make sure you know and are willing and able to meet all requirements for a CVI before you agree to issue one



Your clients and patients can "fly" with ease with your help!